

108 SOUTH STREET, NEW YORK, NY 10038

EXCLUSIVE RETAIL LEASE

1,400 SF Retail Opportunity in New York City's Seaport



IPRG



TABLE OF CONTENTS

03 EXECUTIVE SUMMARY

05 LEASE FLOOR PLANS & IMAGES

FOR MORE INFORMATION,
PLEASE CONTACT EXCLUSIVE AGENTS

Brandon Efap

Director of Retail Leasing
718.360.4761
befap@iprg.com

Ravraj Bhullar

Retail Associate
718.360.8951
rbhullar@iprg.com

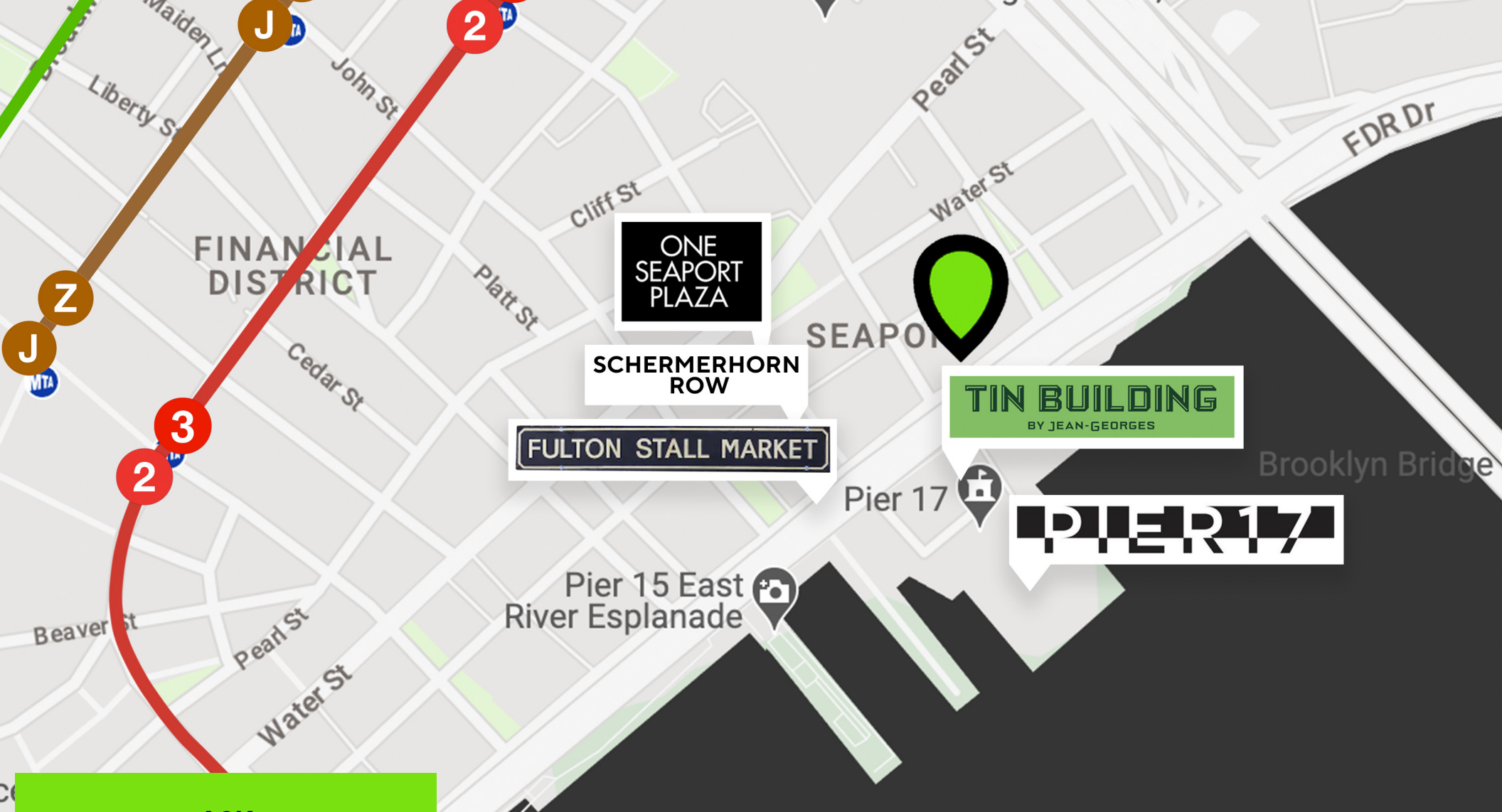
This information has been secured from sources we believe to be reliable, but we make no representations or warranties, expressed or implied, as to the accuracy of the information. References to square footage, age, zoning, lot size are approximate. Buyer must verify the information and bears all risk for any inaccuracies, including the regulatory status of apartments. Any projections, opinions, assumptions or estimates used herein are for example purposes only and do not represent the current or future performance of the property.

www.iprg.com

IPRG

EXECUTIVE SUMMARY





ASK
\$10,000/Month

LEASE HIGHLIGHTS

Beekman St & Peck Slip
 Cross Streets

Seaport
 Neighborhood

1,400 SF
 Size

12'
 Frontage

10'
 Ceiling Heights

Immediate
 Possession

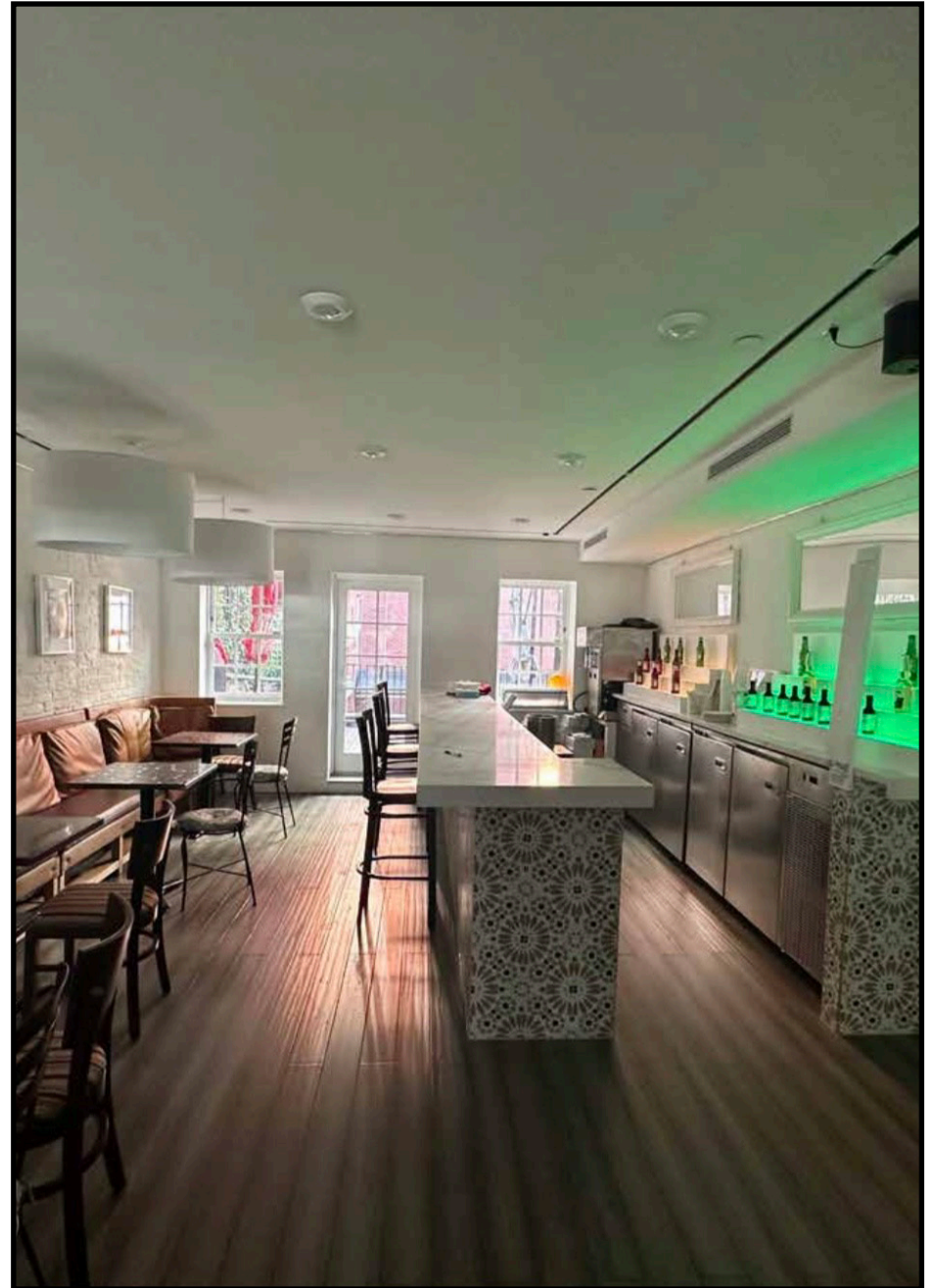
COMMENTS

- Additional Full Mezzanine Space Available for Additional Base Rent
- Newly Available "Di Fara" Pizza For Lease
- Prime Seaport Location With Great Foot, Driving And Tourist Traffic
- Dense Manhattan Location With 938 Residential Units And 230k Sf Of Office

ADDITIONAL PROPERTY PHOTOS - GROUND FLOOR



ADDITIONAL PROPERTY PHOTOS - 3RDFLOOR



An aerial photograph of a city, likely New York City, showing a complex highway interchange with multiple lanes and overpasses. The surrounding area is densely packed with buildings of various heights and styles, interspersed with green spaces and trees. The sky is overcast with grey clouds.

IPRG

**108 SOUTH STREET
NEW YORK, NY 10038**

**BRANDON
EFAP**
718.360.4761
befap@iprg.com

**RAVRAJ
BHULLAR**
718.360.8951
rbhullar@iprg.com
