

6001 14TH AVENUE, BROOKLYN, NY 11219

EXCLUSIVE RETAIL LEASE

IPRG 3,000 SF Retail Opportunity with Mezzanine in Borough Park



TABLE OF CONTENTS

01 EXECUTIVE SUMMARY

FOR MORE INFORMATION,
PLEASE CONTACT EXCLUSIVE AGENTS

Brandon Efap

Director of Retail Leasing
718.360.4761
befap@iprg.com

Ravraj Bhullar

Retail Associate
718.360.8951
rbhullar@iprg.com

This information has been secured from sources we believe to be reliable, but we make no representations or warranties, expressed or implied, as to the accuracy of the information. References to square footage, age, zoning, lot size are approximate. Buyer must verify the information and bears all risk for any inaccuracies, including the regulatory status of apartments. Any projections, opinions, assumptions or estimates used herein are for example purposes only and do not represent the current or future performance of the property.

www.iprg.com

FURNITURE

RETAIL
FOR LEASE

917.312.0291

IPRG BRANDON EFAP • RAJRAJ BELLAR
RETAIL LEASING WWW.IPRG.COM / @IPRG_NY

62 Street Station
Enter with or buy MetroCard at all times.
Elevator at New Utrecht Avenue & 62 St

D



ASK
\$8,500/Month

LEASE HIGHLIGHTS

60th Street & 61st Street
 Cross Streets

3,000 SF w/ Basement + Mezzanine
 Size

12'
 Ceiling Heights

Borough Park
 Neighborhood

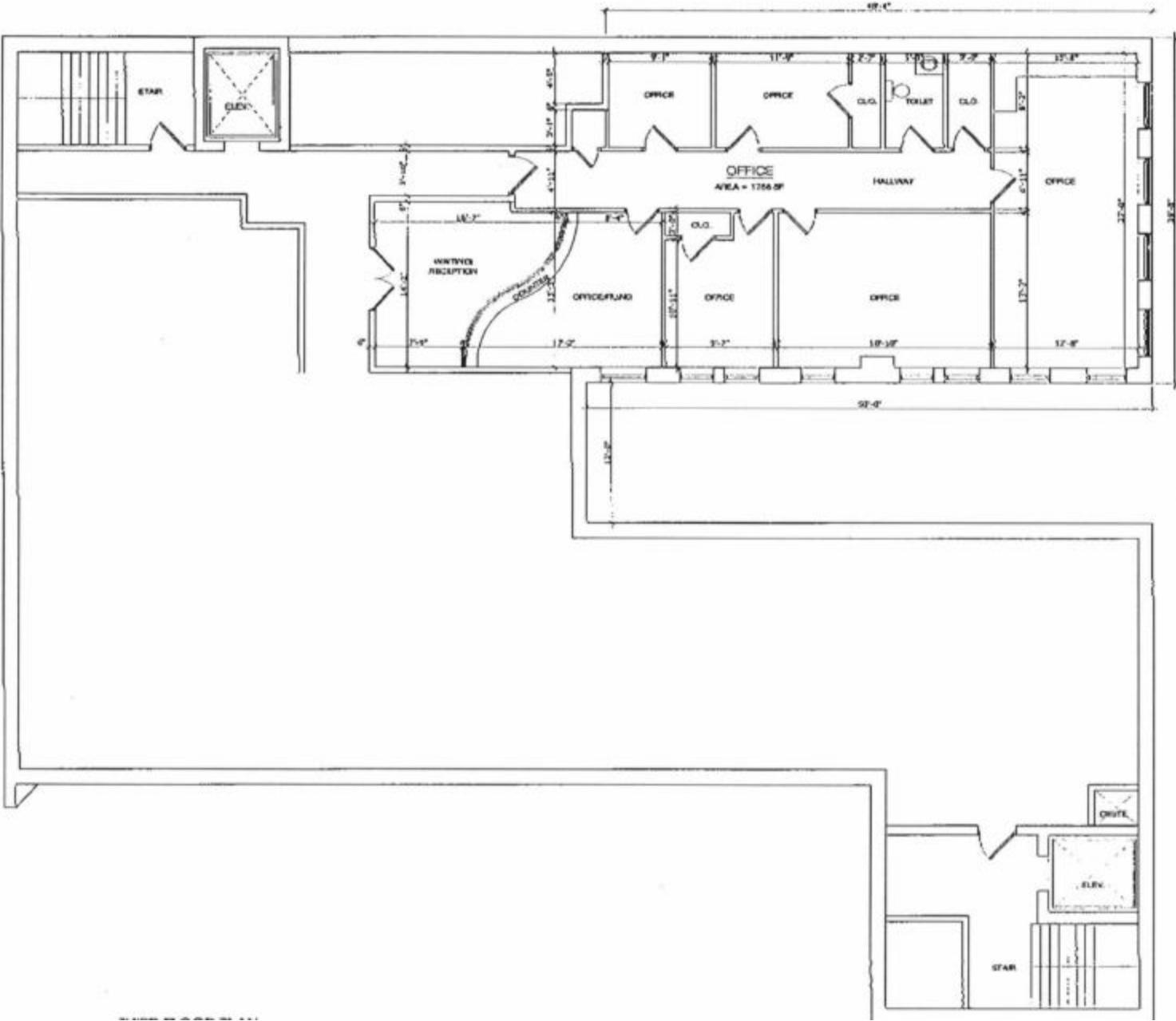
24'
 Frontage

Immediate
 Possession

COMMENTS

- Over 51,000 Households within a 1 Mile Radius
- Storefront Retail Located Directly In Front of Train Entrance
- Prime Borough Park Location with Great Foot and Driving Traffic

FLOOR PLAN





IPRG

**6001 14TH AVENUE
BROOKLYN, NY 11219**

**BRANDON
EFAP**
718.360.4761
befap@iprg.com

**RAVRAJ
BHULLAR**
718.360.8951
rbhullar@iprg.com
