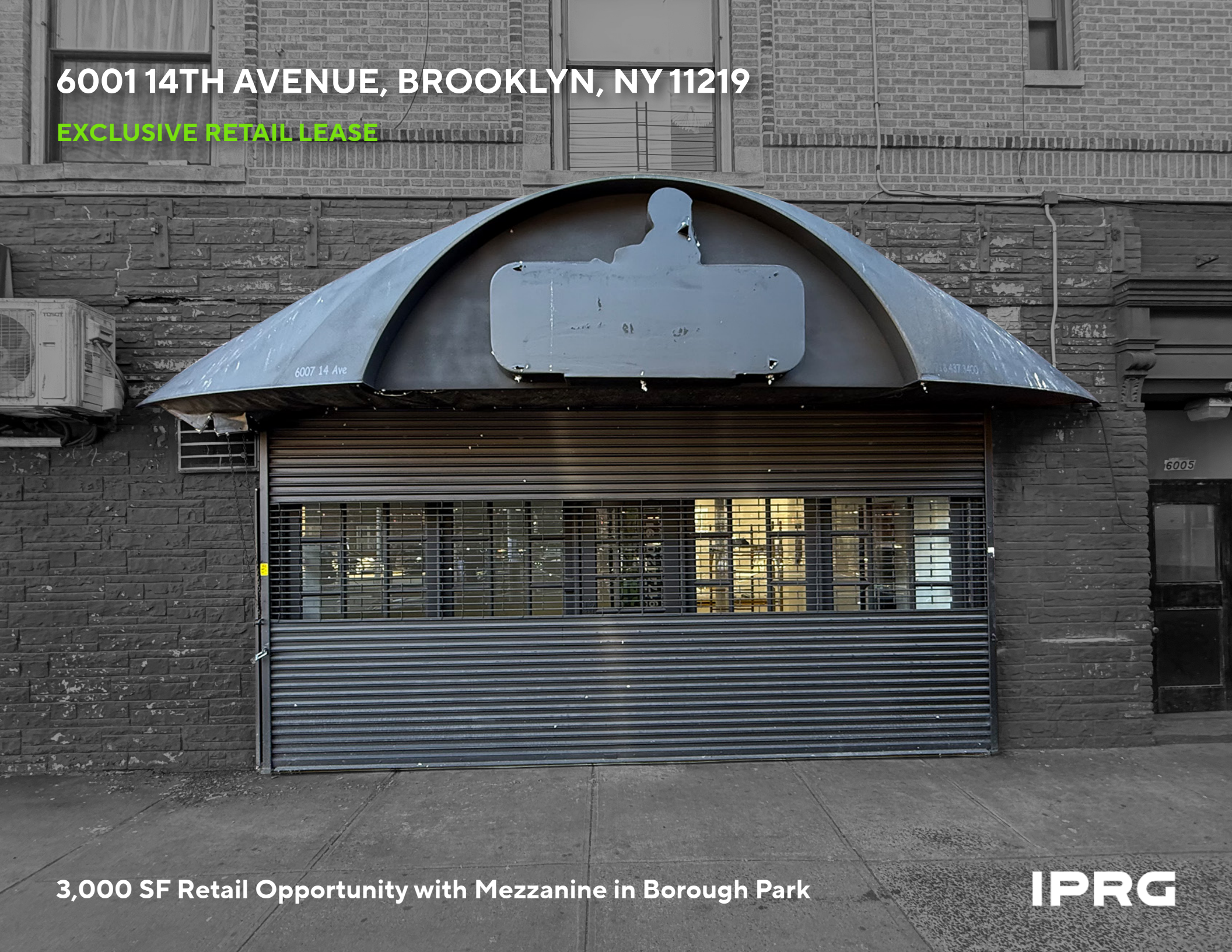


6001 14TH AVENUE, BROOKLYN, NY 11219

EXCLUSIVE RETAIL LEASE



3,000 SF Retail Opportunity with Mezzanine in Borough Park

IPRG



TABLE OF CONTENTS

01 EXECUTIVE SUMMARY

05 LEASE FLOOR PLANS & PROPERTY PHOTOS

FOR MORE INFORMATION,
PLEASE CONTACT EXCLUSIVE AGENTS

Brandon Efap

Director of Retail Leasing
718.360.4761
befap@iprg.com

Joseph Sobolov

Retail Associate
718.416.6140
jsobolov@iprg.com

This information has been secured from sources we believe to be reliable, but we make no representations or warranties, expressed or implied, as to the accuracy of the information. References to square footage, age, zoning, lot size are approximate. Buyer must verify the information and bears all risk for any inaccuracies, including the regulatory status of apartments. Any projections, opinions, assumptions or estimates used herein are for example purposes only and do not represent the current or future performance of the property.

IPRG

EXECUTIVE SUMMARY

6001 14TH STREET





ASK
\$8,000/Month

LEASE HIGHLIGHTS

60th Street & 61st Street
 Cross Streets

3,000 SF w/ Full Basement + Bathroom
 Size

12'
 Ceiling Heights

Borough Park
 Neighborhood

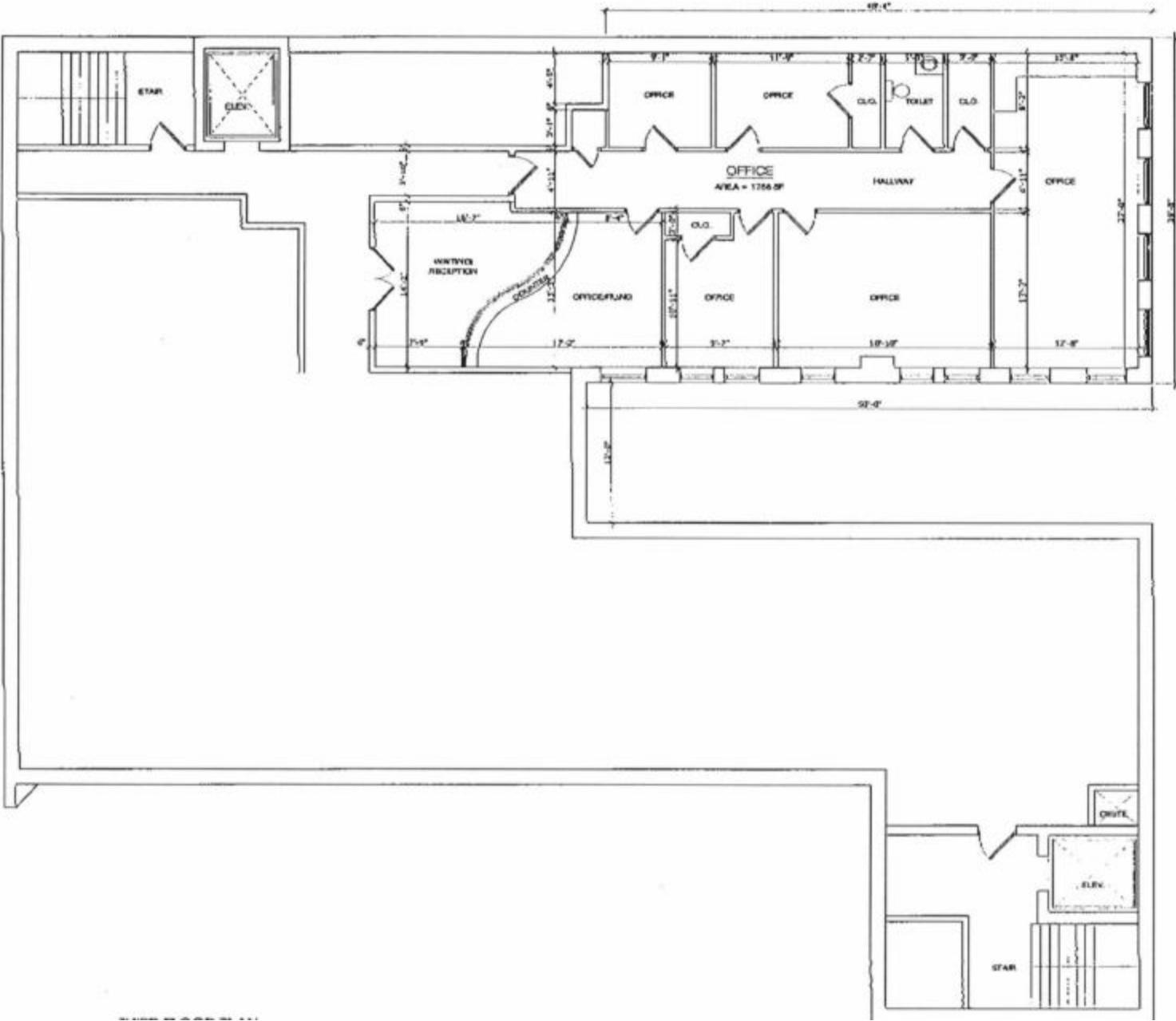
24'
 Frontage

Immediate
 Possession

COMMENTS

- Brand New Whitebox Renovation!
- Space Can Very Easily Be Subdivided
- Over 51,000 Households within a 1 Mile Radius
- Storefront Retail Located Directly In Front of Train Entrance
- Prime Borough Park Location with Great Foot and Driving Traffic

FLOOR PLAN



ADDITIONAL PROPERTY PHOTOS





IPRG

**6001 14TH AVENUE
BROOKLYN, NY 11219**

**BRANDON
EFAP**

718.360.4761

befap@iprg.com

**JOSEPH
SOBOLOV**

718.416.6140

jsobolov@iprg.com
